

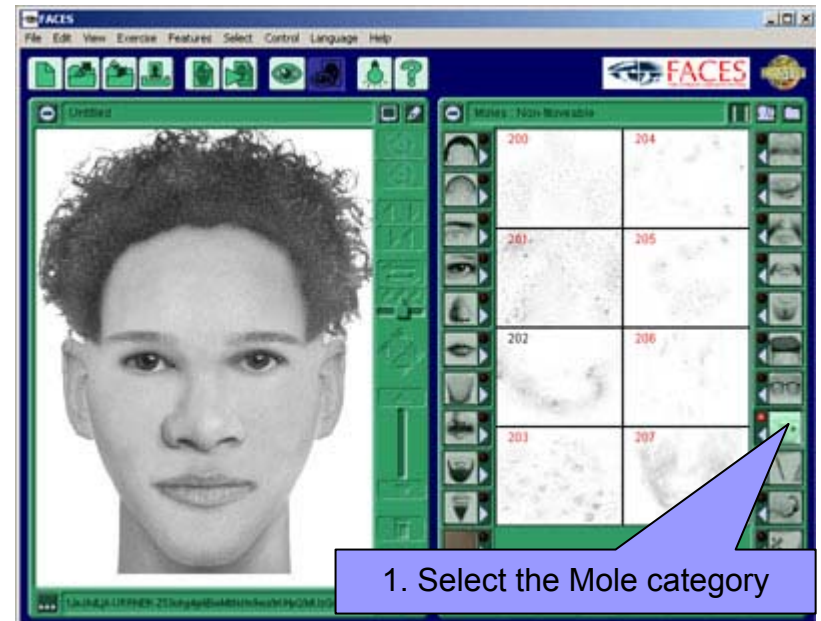
Adding Freckles



Step 1



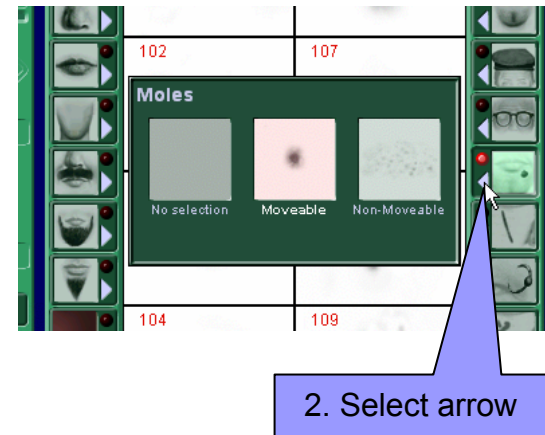
- Select the Mole category just below the Glasses category



1. Select the Mole category

Step 2

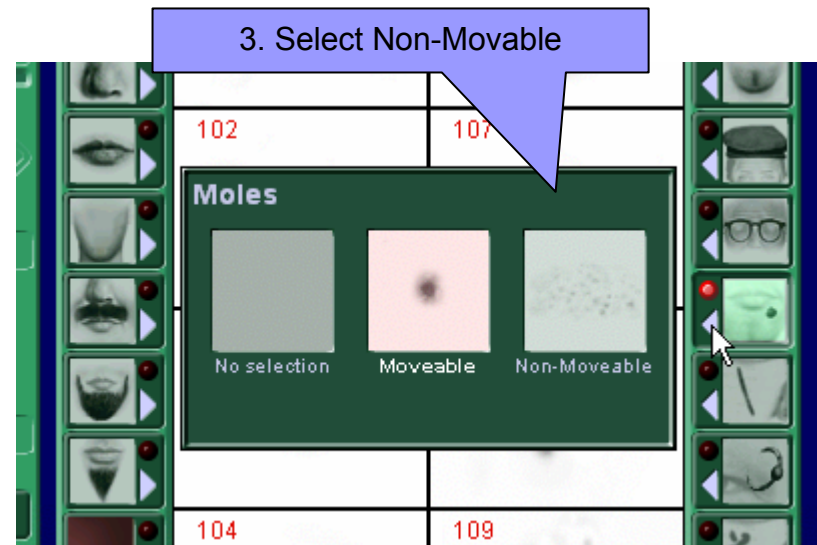
- Click on the arrow located on the left bottom corner of the category button. This arrow will show you all sub-categories within the Moles category.



Step 3

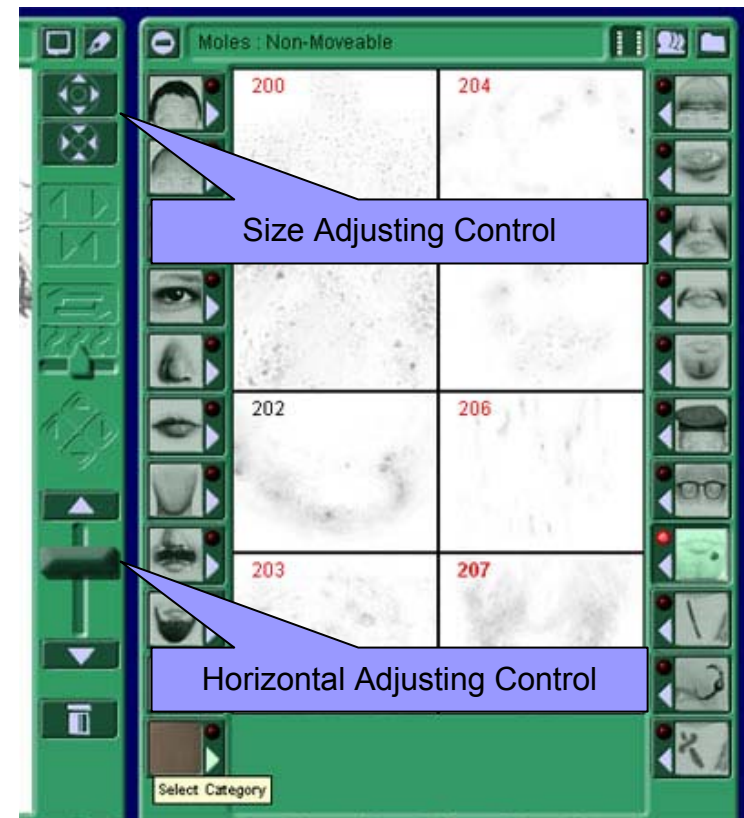


- Select the Non-Movable category.



Step 4

- Now select one of the freckle like elements by clicking on it and adjust the height and size of the freckle.



Final Results



- You have successfully created a freckled composite.
- The same process applies to adding tattoos.



This image is not a photograph of a real person. This is a composite picture.