

Getting Started



Step 1



■ When you insert the FACES cd into your drive, a screen will automatically prompt you to either run FACES from the CD-drive or to install FACES.

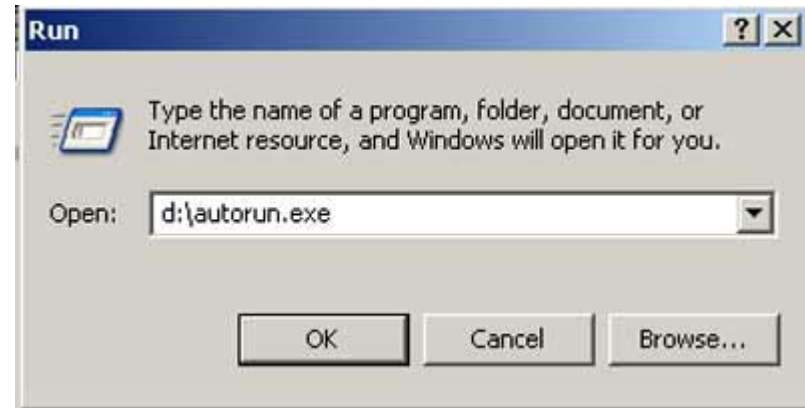
To run from the CD-drive, simply click on the language version that you would like to run. If you prefer to install, simply click on the installation button according to your language preference.



Step 2



- If for some reason you can't see the screen above after inserting the cd into the drive, then click the "Start" button on your desktop and select the "Run" option. Then, type `d:\autorun.exe`. Note that your drive letter (in this case d:) may be different..



Step 3



- MAC users, should browse the CD contents to find the autorun.exe file.

